



## CITROËN C1

Vehicle instruction manual: in the glove compartment

Fuel: Petrol EURO95/E10

Tyre pressure: see sticker on the pillar of the driver's door

Transmission: automatic gearbox

### Start the car

You can either opt for the comfort of an automatic gearbox or the joy of manual shifting.

Start the engine in neutral:

Depress the brake pedal, shift to **N** and start the engine.

Careful: if you do not depress the brake pedal or the gear lever is not set to neutral (**N**), the engine will not start.



**Automatic transmission** (easy): pull the gear lever back (with the brakes applied) to select this setting (**E**).

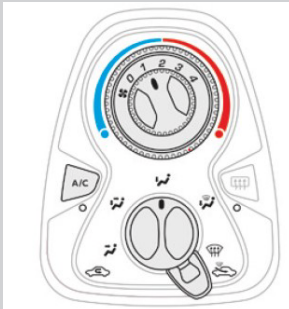
**Manual transmission:** with the brakes applied, pull the gear lever back and to the left to select this mode (**M**). You can now shift by tapping the gear selector forward (+) or back (-). Alternatively, you can use the shift paddles behind the steering wheel (shift up with the left paddle +, shift down with the right paddle -).

You can switch from M (manual) mode to E (automatic) and vice versa while driving. Never shift to Neutral while driving.

**Caution: the car will set itself in motion automatically as soon as you release the brake pedal.**

The selected mode (**R**, **N**, **E** or **M**) is displayed on the dashboard.

## Air conditioning/Heating



### Temperature control

Rotate the dial (outer ring) from blue (cooler) to red (warmer) to adjust the temperature to your liking.

### Air flow adjustment

Rotate the dial from setting 1 to 4 to adjust the air flow.

### Air distribution

Set the direction of the airflow: towards the legs, the windshield, etc.

### Outside air mode/recirculation

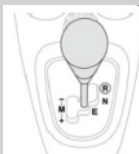
The recirculation mode (turn the bottom dial to the left) serves to close off outside air intake in case of odors or dust. Remember to switch back to outside air mode as quickly as possible (turn dial to the right) to reduce the risk of stale air or condensation forming on the windows.

**Air conditioning:** Press the A/C button on the left to turn the air conditioning on or off.

**Rear window defroster:** use the right-hand switch.



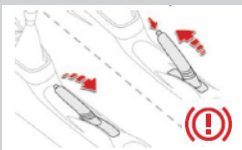
## Reverse gear



**Automatic** – start the engine in neutral gear (N) – see earlier. To

engage reverse gear: with the brakes applied, shift the gear lever to R (forward right).

## Handbrake



To release the handbrake pull the lever up slightly and push the button at the end. You can then lower the handbrake lever. If the

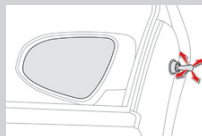
handbrake is engaged whilst riding, a red warning sign lights up on the dashboard. Release the handbrake immediately!

## Open the boot



Press the black button on the hatch, and open the boot with the handle.

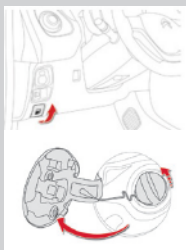
## Adjust side mirrors



To be adjusted manually (use the controls to set the mirrors to the desired position).

## Fuel cap

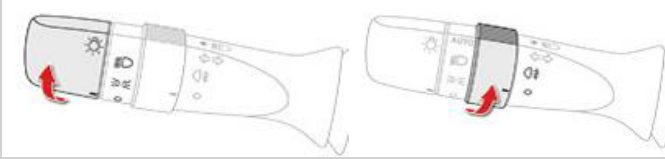
To unlock, pull the switch on the bottom half of the dashboard on the driver's side. The fuel cap is located on the driver's side at the back.



## Spare wheel

This car does not carry a spare wheel; a repair kit is stored under the boot floor.

### Headlights/Fog lights



**Headlights:** rotate the dial at the end of the lever left of the steering wheel forward two clicks to operate the headlights (regular lights for nighttime driving). Pull the lever towards you to briefly engage the high beams. Push the lever towards the dashboard for continuous high beams. Pull the lever a second time to turn off the high beams.

**Fog lights:** turn the collar on the lever forward to operate the rear fog lights. A second control light appears on the dashboard. To switch back off, turn the collar back.

### Windshield wipers

#### Front wipers:

Set the desired speed with the windscreen speed control lever.



Single wiper



Off



Intermittent



Normal speed

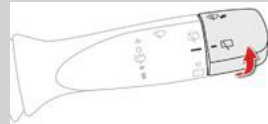


High speed

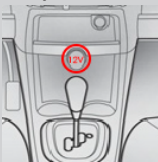


#### Rear wipers:

Rotate the dial forward one click to operate the rear wipers (intermittent).

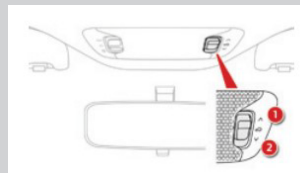


### 12 Volt socket + USB port



On the lower part of the central console.

### Folding roof

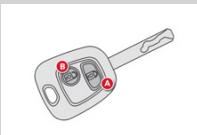


To unfold or fold the roof, press the unfolding (1) or folding switch (2) on the car ceiling, above the mirror.

**Always remember to fold the roof when you leave the vehicle.**

To lock the roof completely, hold the switch in between settings (1) and (2) until the roof is locked in place.

### Steering lock



Turn the steering wheel and simultaneously turn the ignition key to release the lock.

### Park assist

Refer to the lights on the dashboard (opposite the steering wheel). The closer you get to an object, the more lights will start to light up (left and right of the middle point).