



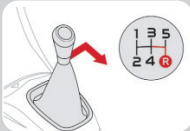
CITROËN C1

Vehicle instruction manual: in the glove compartment

Fuel: Petrol **E10/EURO95**

Tyre pressure: see sticker on the pillar of the driver's door

Reverse gear



Move the shifter right and back to put it in reverse.

Handbrake

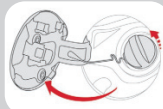


To release the handbrake pull the lever up slightly and push the button at the end. You can then lower the handbrake lever. If the handbrake is engaged

whilst riding, a red warning sign lights up on the dashboard. Release the handbrake immediately!

Fuel cap - E10/EUR95

To unlock, pull the switch on the bottom half of the dashboard on the driver's side. The fuel cap is located on the driver's side at the back.



Adjust mirrors



The controls are located on the dashboard, left of the steering wheel:

A : Select left or right sidemirror.
B : You can adjust the mirror in all directions.

Steering lock



Turn the steering wheel and simultaneously turn the ignition key to release the lock.

12 volt socket



On the lower part of the central console.

Folding roof

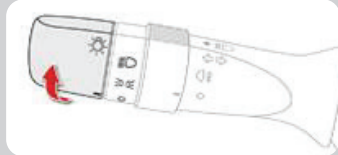


To unfold or fold the roof, press the unfolding (1) or folding switch (2) on the car ceiling, above the mirror. **Always remember to fold the roof when you leave the vehicle.**

To lock the roof completely, hold the switch in between settings (1) and (2) until the roof is locked in place.

Headlights/Fog lights

Headlights: rotate the dial at the end of the lever left of the steering wheel forward two clicks to operate the headlights (regular lights for nighttime driving). Pull the lever towards you to briefly engage the high beams. Push the lever towards the dashboard for continuous high beams. Pull the lever a second time to turn off the high beams.



Fog lights: turn the collar on the lever forward to operate the rear fog lights. A second control light appears on the dashboard. To switch back off, turn the collar back.



Windshield wipers

Front wipers:

Set the desired speed with the windscreen speed control lever.



Single wipe



Off



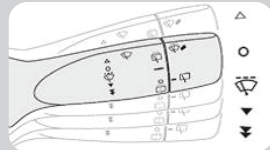
Intermittent



Normal speed

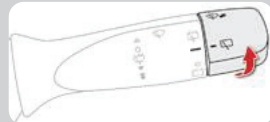


High speed

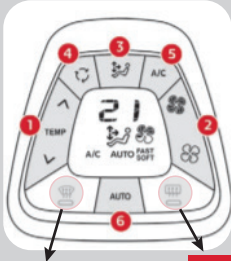


Rear wipers:

Rotate the dial forward one click to operate the rear wipers (intermittent).



Air conditioning/Heating



1. Adjusting the temperature.
2. Air flow adjustment.
3. Air distribution adjustment.
4. Recirculation of interior air.
5. Air conditioning On/Off.
6. **Automatic program** : it automatically adjusts all settings for the following functions to provide optimum operation for the comfort level chosen.

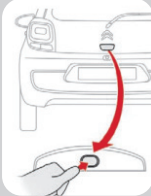


Front window defroster: use this button.



Rear window defroster: use this button.

Open the boot



Press the black button on the hatch, and open the boot with the handle.

Spare wheel

This car does not carry a spare wheel; a repair kit is stored under the boot floor.